



7075-12" in Textured Black (TB)



7075-24" in Textured Black (TB)

7075 LED

The BRICK-OD (outdoor) is a minimal, clean and contemporary exterior sconce with exceptional versatility: Three ADA compliant sizes (8", 12" and 24"), single direction LED distribution, and three finishes to choose from. Perfect for exterior facades, entryways, columns, and breezeways. Since this is a wet-listed unit, it can also be used in healthcare applications requiring durable luminaires which can be wiped down. Available with integral battery backup.

FINISHES



BRICK-OD OUTDOOR

FOR INDOOR, REFER TO MODEL #: 1575

STANDARD SPECIFICATIONS - SINGLE DIRECTION DISTRIBUTION (7075)

OUTER FRAME & MOUNT PLATE

Formed and welded aluminum. Countersunk fasteners located on top of fixture. No exposed hardware on sides or bottom of fixture. Closed cell foam gasket on rear mount plate.

DIFFUSER

UV stabilized frosted acrylic diffuser. Smooth uniform illumination.

LED PERFORMANCE - 3500K STANDARD - TYPE 2 DISTRIBUTION

120-277V - 3500K, L80 rating - 60,000 hrs - L70 rating (projected) - 100,000 hrs

Amperage rated @ 110V input

Operating ambient temperature: -20°C / -4°F - 60°C / 140°F

Delivered 3500K lumens noted. Consult Brownlee.com for performance of all CCTs.

08 Size: C13 - 13W nominal, .10 A input - 1165 lm. Dimmable (0-10V). 82 CRI Standard.

12 Size: H08 - 8W nominal, .07 A input - 860 lm. Dimmable (0-10V). 90+ CRI Standard.

12 Size: H16 - 16W nominal, .14 A input - 1490 lm. Dimmable (0-10V). 90+ CRI Standard.

12 Size: H21 - 21W nominal, .18 A input - 1725 lm. Dimmable (0-10V). 90+ CRI Standard.

24 Size: H16 - 16W nominal, .14 A input - 1470 lm. Dimmable (0-10V). 90+ CRI Standard.

24 Size: H32 - 32W nominal, .27 A input - 3030 lm. Dimmable (0-10V). 90+ CRI Standard.

24 Size: H41 - 41W nominal, .35 A input - 3410 lm. Dimmable (0-10V). 90+ CRI Standard.

MOUNTING

Fixture mounts to a 4x4 junction box (by others).

Wet-listed in the downward orientation only (light source facing down).

FINISH

Durable corrosion resistant powder coat finish.

Custom colors available, contact factory.

WARRANTY

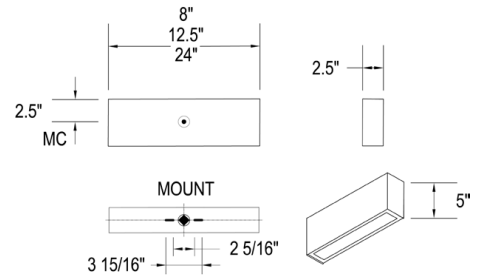
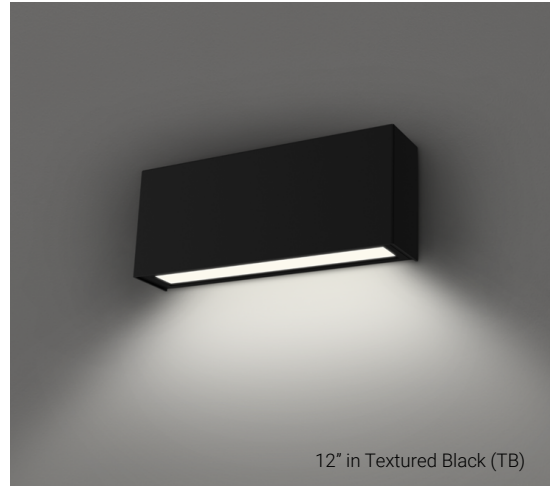
5 year limited warranty on this LED product.

Consult factory for details.

Integral Battery Backup
Refer to options section



PROJECT:
MODEL #:
FIXTURE TYPE:



WET



ORDERING INFORMATION

7075	-	-	-	-	-	-
Model	2.	3.	4.	5.	6.	

2. SIZE

08	L: 08"
12	L: 12"
24	L: 24"

3. FINISH

TB	Textured Black
TG	Textured Grey
TW	Textured White

Note: TB, TG, TW are ultra fine textured matte finishes. Contact your local representative for color swatches.

CUSTOM

Additional finishes available as a modified option. Refer to Brownlee's [Finishes webpage](#) for inspiration.

4. WATTAGE

08 SIZE	
C13	13W C Series LED
12 SIZE	
H08	08W H Series LED
H16	16W H Series LED
H21	21W H Series LED
24 SIZE	
H16	16W H Series LED
H32	32W H Series LED
H41	41W H Series LED

5. COLOR TEMPERATURE

35K	3500K color temperature
27K	2700K color temperature (C Series Only)
30K	3000K color temperature
40K	4000K color temperature

6. AVAILABLE OPTIONS

90R⁰	90 CRI (C-Series Wattages: 30K only)
BAC¹	Buy American Compliant
BBI²	Integral Battery Backup - 10W (32F minimum)
BBC²	Integral Battery Backup, Cold Weather - 15W (-4F minimum) (24 Size Only)
<i>Battery must be connected to continuous power supply within 7 Mo. of shipping. See Warranty Note 3.</i>	
DTR⁴	Triac (Line Voltage) Dimming (120V) (Cannot be combined with BBI/BBC)
ES⁶	ENERGY STAR® (All except H08, H21, H41)
FCL⁷	French Canadian Label
PO1	Photo Control (120V)
PO2	Photo Control (208, 240, 277V)
T24⁹	Title 24 JA8 Compliant (H16 & H32 only)

Universal Footnotes (only applies if option is listed on spec sheet): (0) **90R** - 90 CRI output-loss multiplier: 0.85 (estimate). Cannot be combined with ES. (1) **BAC** - cannot be combined with FCL. (2) **BBI/BBS/BBC** - cannot be combined with ECW or EXT. (3) **BLD** - includes integral microwave motion sensor (do not combine with OCC option). Cannot be combined with DTR. (4) **DTR** - cannot be combined with BLD. (5) **ECW** - cannot be combined with BBI, BBC, or DTR. (6) **ES** - cannot be combined with 90R or T24. (7) **FCL** - cannot be combined with BAC. (8) **OCC** - integral microwave motion sensor (ON/OFF). (9) **T24** - includes JA8 labeling and 90 CRI LEDs (do not combine with 90R option). Cannot be combined with ES. (10) **PCH/PC4** - cannot be combined with BLD or OCC. **Add'l Notes: *BBI/BBC** - BBI minimum operating temp: 10C/50F unless otherwise stated. BBC minimum operating temp: -20C/-4F. ****BLD** - integral microwave motion sensor with step-dim control. 1: Motion is detected, illuminate to 100%. 2: Motion no longer detected, dim to set level. 3: Remain in continuous dimmed state or turn off after set period. Configurable via onboard dip switches.

Specifications and dimensions subject to change without notice.

Consult your Brownlee Lighting representative for availability and ordering information.



REVISED
2023.11.27

BRICK-OD OUTDOOR

PHOTOMETRIC DATA - For theoretical reference only. Data subject to change without notice.

PROJECT:
MODEL #:
FIXTURE TYPE:

ISOFOOTCANDLE PLOT LEGEND

10 fc 5 fc 2 fc .5 fc .25 fc
 Mounting Height: 10'
 Calculation Grid: 10' x 10'

POLAR GRAPH LEGEND

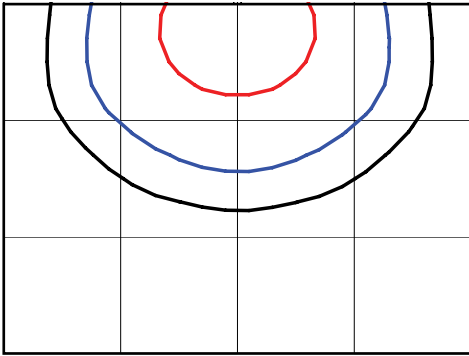
1 - Vertical Plane Through Horizontal Angles (5 - 185)
 (Through Max. Cd.)
 # 2 - Vertical Plane Through Horizontal Angles (90 - 270)
 # 3 - Horizontal Cone Through Vertical Angle (17.5)
 (Through Max. Cd.)

PHOTOMETRIC DATA

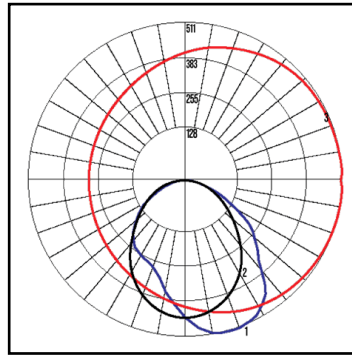
ADDITIONAL LUMEN PACKAGES AVAILABLE. CONTACT FACTORY FOR SUPPORTING PLOTS OR REFER TO IES FILES ONLINE.

Model: 7075-08-C13-35K / QTY: 1
 Description: 08" Size, 13W, 1160 lm

ISOFOOTCANDLE PLOT



POLAR GRAPH

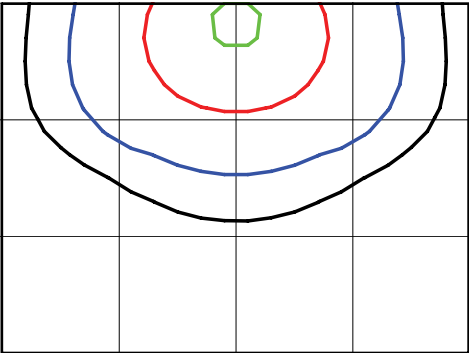


BUG RATING
 B1-U0-G0

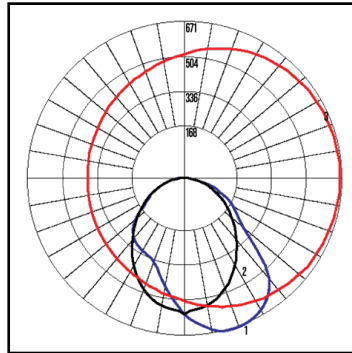
DISTRIBUTION
 TYPE 2

Model: 7075-12-H16-35K / QTY: 1
 Description: 12" Size, 16W, 1490 lm

ISOFOOTCANDLE PLOT



POLAR GRAPH

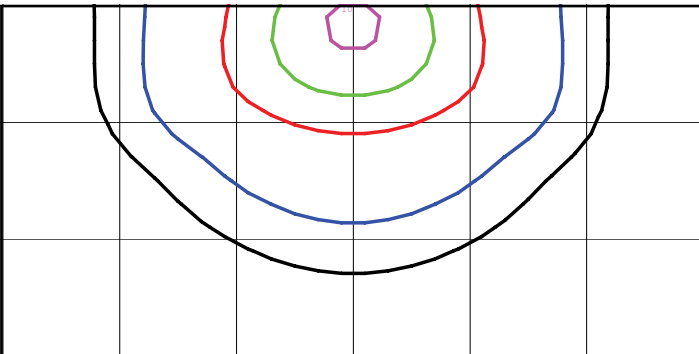


BUG RATING
 B1-U0-G1

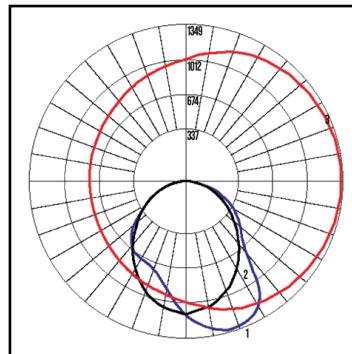
DISTRIBUTION
 TYPE 2

Model: 7075-24-H32-35K / QTY: 1
 Description: 24" Size, 32W, 3030 lm

ISOFOOTCANDLE PLOT



POLAR GRAPH



BUG RATING
 B1-U0-G1

DISTRIBUTION
 TYPE 2

Specifications and dimensions subject to change without notice.
 Consult your Brownlee Lighting representative for availability and ordering information.