

CONVEX

STANDARD SPECIFICATIONS

TRIM

Cold rolled 20 GA, formed with spinning and die punch tooling. The assembly also features machined steel spacers and is assembled with solid brass hardware. The stem and canopy are both cold rolled steel.

DIFFUSER

Translucent, UV stabilized, white acrylic. Diffuser is injection molded allowing for a quality uniform thickness throughout.

PAN

Cold rolled 20 GA steel, formed with die punch tooling. The pan is finished in a high reflectance white powder coat.

LED PERFORMANCE - 3500K STANDARD

120-277V - 3500K, 82 CRI - L80 rating - 60,000 hrs - L70 rating (projected) - 100,000 hrs
 Amperage rated @ 110V input
 Operating ambient temperature: -20°C / -4°F - 40°C / 104°F

Delivered 3500K lumens noted. Consult Brownlee.com for performance of all CCTs.

16 Size: R11 - 11W nominal, .09 A input - 895 lm. Dimmable (0-10V).
 16 Size: R18 - 18W nominal, .15 A input - 1430 lm. Dimmable (0-10V).
 16 Size: R22 - 22W nominal, .19 A input - 1685 lm. Dimmable (0-10V).

MOUNTING

Directly to j-box (by others). Mounting hardware included.

FINISH

The standard finish is a sturdy electroplated brushed nickel. Options include all Brownlee paint finishes. Plated finishes such as Brushed Nickel are suitable for indoor applications only. Installation outdoors voids the Brownlee Limited Warranty.

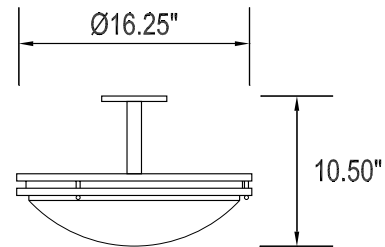
WARRANTY

5 year limited warranty on this LED product. Consult factory for details.

PROJECT:
MODEL #:
FIXTURE TYPE:



BN finish, WHA diffuser



DAMP



ORDERING INFORMATION

2057 - - - - -
 Model 2. 3. 4. 5.

2. FINISH	3. WATTAGE	4. COLOR TEMPERATURE	5. AVAILABLE OPTIONS
STANDARD BN Brushed Nickel OPTIONAL BL Black BZ Bronze GM Gun Metal MB Metallic Bronze MG Metallic Gold NT Nickel Tone PL Platinum WH White CUSTOM Provide color sample or RAL code to match	R11 11W R Series LED R18 18W R Series LED R22 22W R Series LED	35K 3500K standard color temperature 27K 2700K color temperature 30K 3000K color temperature 40K 4000K color temperature	90R⁰ 90 CRI (30K & 35K only) BAC¹ Buy American Compliant BLD^{3**} Bi-Level Dimming DTR⁴ Triac (Line Voltage) Dimming (120V) ES⁶ ENERGY STAR® (Not available in 90 CRI) FCL⁷ French Canadian Labels OCC⁸ Occupancy Sensor T24⁹ Title 24 JA8 Compliant (30K & 35K only)

Universal Footnotes (only applies if option is listed on spec sheet): (0) 90R - 90 CRI output-loss multiplier: 0.85 (estimate). Cannot be combined with ES. (1) BAC - cannot be combined with FCL. (2) BBI/BBS/BBC - cannot be combined with ECW or EXT. (3) BLD - includes integral microwave motion sensor (do not combine with OCC option). Cannot be combined with DTR. (4) DTR - cannot be combined with BLD. (5) ECW - cannot be combined with BBI, BBC, or DTR. (6) ES - cannot be combined with 90R or T24. (7) FCL - cannot be combined with BAC. (8) OCC - integral microwave motion sensor (ON/OFF). (9) T24 - includes JA8 labeling and 90 CRI LEDs (do not combine with 90R option). Cannot be combined with ES. (10) PCH/PC4 - cannot be combined with BLD or OCC. **Add'l Notes:** *BBI/BBC - BBI minimum operating temp: 10C/50F unless otherwise stated. BBC minimum operating temp: -20C/-4F. **BLD - integral microwave motion sensor with step-dim control. 1: Motion is detected, illuminate to 100%. 2: Motion no longer detected, dim to set level. 3: Remain in continuous dimmed state or turn off after set period. Configurable via onboard dip switches. **Specifications and dimensions subject to change without notice.**
 Consult your Brownlee Lighting representative for availability and ordering information.